

ColorBand Prestained Protein Marker Broad Range 15 kDa -130 kDa

Cat#:8011031/801103X

[Product Name]

ColorBand Prestained Protein Marker Broad Range 15 kDa -130 kDa

[Model & Size]

Product Name	Cat No.	Size
ColorBand Prestained Protein Marker Broad Range 15 kDa -130 kDa	8011031	250 μ L
	801103X	250 μ L \times 5

[Product Description]

The product is composed of 9 purified pre-stained protein with a molecular weight range of 15~130 kDa (15 kDa, 20 kDa, 25 kDa, 33 kDa, 43 kDa, 55 kDa, 70 kDa, 95 kDa and 130 kDa). The 70 kDa band is orange, the 25 kDa band is green, and the rest bands are blue. It is suitable as a protein molecular weight standard for SDS-PAGE or Western Blot. It can be used to directly observe the protein electrophoresis status and clearly judge the transmembrane effect of Western Blot.

The product is a ready-to-use liquid that does not require heating, dilution or adding reducing agents before loading sample. It can be loaded directly for SDS-PAGE.

The concentration of each protein band in the product is approximately 0.1~0.4 mg/mL.

[Storage Buffer]

60 mM Tris-H₃PO₄ (pH 7.5, 25°C), 2% (w/v) SDS, 5 mM EDTA, 0.02% (v/v) proclin300, 33%(v/v) glycerin.

[Storage And Transportation]

Store at -25°C~-15°C. Valid for 24 months. Avoid repeated freezing and thawing.

Transported on blue ice.

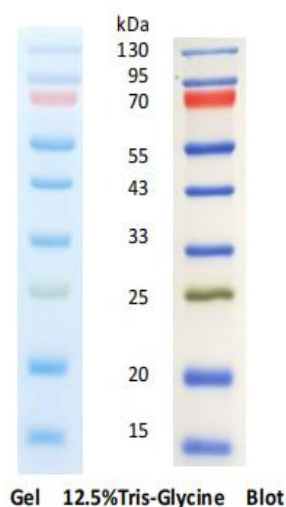
[Instruction]

1. This product is ready-to-use liquid. Take it out of the refrigerator and leave it stationarily at room temperature for a few minutes before using it.
2. For SDS-PAGE, if you use Mini-gel (0.75 mm-1.0 mm), you need load 5 μ L Marker in each well. For Western Blot, you need 2~3 μ L Marker in each well. If the concentration of the separation gel is less than 8% , and the thickness of it is \geq 1.5 mm or Large-gel, it was necessary to increase the amount of marker appropriately.

[Precaution]


1. The product avoids repeated freezing and thawing and stored at -25°C~-15°C after sub-packaging.
2. After pre-stained band binding dye, the molecular weight will change during SDS-PAGE at different concentration of the gel. It is only for reference when used to judge the molecular weight of the target protein. For the separation of 15~130 kDa bands of protein , it is recommended to use New Flash Protein AnyKD PAGE Gel (Cat. No. 8012011).
3. This product is suitable for common membranes such as PVDF, nylon and cellulose acetate membranes.
4. The transfer effect is related to the transfer time and needs to be determined according to the size of the target band. If the transfer time is short, some of the large molecular weight bands may not be successfully transferred, which is a normal phenomenon.
5. For your safety and health, please wear a lab coat and disposable gloves.

[Product Legend]











[Molecular Weight Guide]

When using different protein gel types, concentration and electrophoresis buffer, the colored protein marker shows different mobilities and slightly different molecular weights, as shown in the table below.

Band	Color	TRIS-GLYCINE	BIS-TRIS (MOPS)	
1	Blue	130	140	
2	Blue	95	95	
3	Orange	70	65	
4	Blue	55	52	
5	Blue	43	41	
6	Blue	33	33	
7	Green	25	25	
8	Blue	20	17	
9	Blue	15	10	

[Description Of Product Symbol]

Product Symbol	Description	Product Symbol	Description
	Catalog Number		Batch Code
	Date of Manufacture		Manufacturer
	Keep away from light		Temperature limit
	Consult instructions for use		Use-by date

[Instruction Revision Date]

April 23, 2024

[Company Information]

Manufacturer and after-sales service unit Name: Shenzhen Dakewe Bio-engineering Co., Ltd.

Website: www.dakewe.com

Telephone: (86-755) 86235300

Email: RD@dakewe.com

Address: Room 702-703, Building No.1, Shenzhen Biomedicine Innovations Industrial Park, No.14 Jinhui Road, Kengzi Street, Pingshan District, Shenzhen, China

After-sales service telephone: (86-755) 86235300

Zip Code: 518122