

GAPDH Mouse Monoclonal Antibody

Cat#: 8017031

[Product Name]

GAPDH Mouse Monoclonal Antibody

[Model & Size]

Product Name	Cat No.	Size
GAPDH Mouse Monoclonal Antibody	8017031	100 µg

[Product Introduction]

Source	Applications	Reactivity	Observed Band
Mouse	WB, IHC-p, IF	Human; Rat; Mouse; Mk; Dg; Ch; Hamster; Rabbit; Pig; sheep; Insect; Yeast	37 kDa

[Storage And Transportation]

Stored at -25 °C to -15 °C, valid for 12 months .

Transported on blue ice.

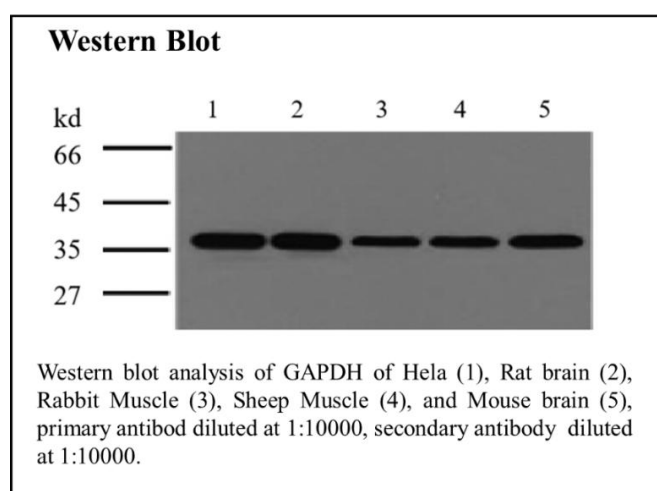
[Antibody Details]

Gene Name:	GAPDH
Protein Name:	Glyceraldehyde-3-phosphate dehydrogenase
Others Name:	GAPDH; GAPD; CDABP0047; OK/SW-cl.12; GAPDH
Human Gene Id:	2597
Human Swiss Prot No.:	P04406
Mouse Gene Id:	100042025
Mouse Swiss Prot No.:	P16858
Rat Gene Id:	24383
Rat Swiss Prot No.:	P04797
Immunogen:	Synthetic Peptide of human GAPDH AA range: 200-300
Specificity:	The antibody detects endogenous GAPDH protein.
Composition:	PBS, pH 7.4, containing 0.5%BSA, 0.02% sodium azide as Preservative and 50% Glycerol.
Source:	Monoclonal, Mouse
Concentration:	1 mg/mL
Dilution:	WB 1:5000-20000; IHC-p 1:200-300; IF 1:200
Purification:	The antibody was affinity-purified from mouse ascites by affinity chromatography using specific immunogen.
Subcellular Location:	Cytoplasm, cytosol, Nucleus, Cytoplasm, perinuclear region, Membrane
Expression:	Astrocytoma, Brain, Cajal-Retzius cell, Colon adenocarcinoma, Epitheliu









[Precautions]

1. IF this antibody is used in immunohistochemistry (IHC), immunofluorescence (IF), Western Blot (WB) and other experiments, please take care to retrieve the used diluted antibody. The recovered antibody can usually be reused at least 5-10 times. The diluted antibodies, including those that have already been used, should be stored at 2°C ~8°C.
2. If the antibody is reused after recovery, use the same method as the freshly diluted antibody. If slight turbidity of the antibody is found during repeated use, the antibody can be centrifuged at 10,000g for 1-3 minutes, and the supernatant can be used for subsequent testing. If the recovered antibody shows obvious flocculence or growth of mold and bacteria, it can be considered to discard the antibody.
3. This product is limited to the scientific research use of professionals. It should not be used for clinical diagnosis or treatment, food or medicine, or stored in ordinary residences.
4. For your safety and health, please wear a lab coat and wear disposable gloves to operate.

[Products Image]



[Description Of Product Symbol]

Product Symbol	Description	Product Symbol	Description
	Catalog Number		Batch Code
	Date of Manufacture		Manufacturer
	Keep away from light		Temperature limit
	Consult instructions for use		Use-by date

[Instruction Revision Date]

April 23, 2024

[Company Information]

Manufacturer and after-sales service unit Name: Shenzhen Dakewe Bio-engineering Co., Ltd.

Website: www.dakewe.com

Telephone: (86-755) 86235300

Email: RD@dakewe.com

Address: Room 702-703, Building No.1, Shenzhen Biomedicine Innovations Industrial Park, No.14 Jinhui Road, Kengzi Street, Pingshan District, Shenzhen, China

After-sales service telephone: (86-755) 86235300

Zip Code: 518122