

β-tubulin Mouse Monoclonal Antibody

Cat#: 8017101

[Product Name]

β-tubulin Mouse Monoclonal Antibody

[Model & Size]

| Product Name | Cat No. | Size |
|-------------------------------------|---------|--------|
| β-tubulin Mouse Monoclonal Antibody | 8017101 | 100 μg |

[Product Introduction]

| Source | Applications | Reactivity | Observed Band |
|--------|--------------|--|---------------|
| Mouse | WB; IF; IHC | Human; Rat; Mouse; Mk; Dg; Ch; Hamster; Rabbit; sheep; Insect; Yeast; Fish; Bovine; Rice | 55 kDa |

[Storage And Transportation]

Stored at -25°C to -15°C, valid for 12 months.

Transported on blue ice.

[Antibody Details]

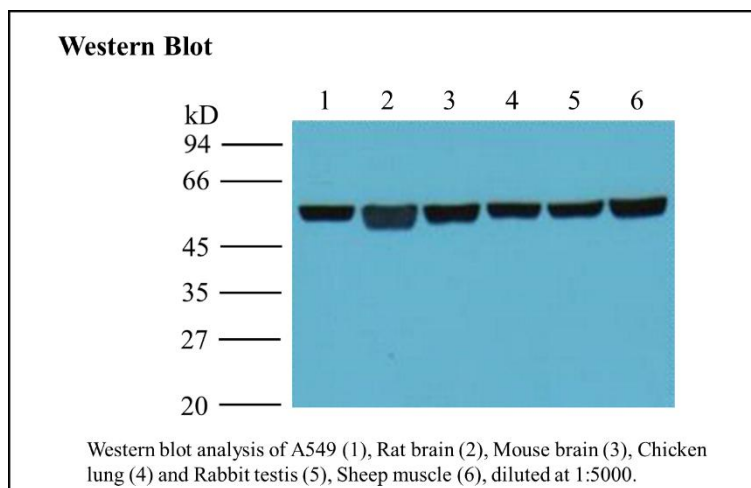
| | |
|-----------------------|--|
| Gene Name: | TUBB3 |
| Protein Name: | Tubulin beta-3 chain |
| Human Gene Id: | 10381 |
| Human Swiss Prot No.: | Q13509 |
| Mouse Gene Id: | 22152 |
| Mouse Swiss Prot No.: | Q9ERD7 |
| Rat Gene Id: | 246118 |
| Rat Swiss Prot No.: | Q4QRB4 |
| Immunogen: | Synthetic Peptide of β-Tubulin |
| Specificity: | The antibody detects endogenous β-tubulin protein. |
| Composition: | PBS, pH7.4, containing 0.5%BSA, 0.02% sodium azide as Preservative and 50% Glycerol. |
| Source: | Monoclonal, Mouse |
| Concentration: | 1 mg/mL |
| Dilution: | WB 1:5000; IF 1:200; IHC 1:200 |
| Purification: | The antibody was affinity-purified from mouse ascites by affinity-chromatography using specific immunogen. |

| | |
|-----------------------|--|
| Subcellular Location: | Cytoplasm, cytoskeleton, Cell projection, growth cone, Cell projection, lamellipodium, filopodium. |
| Expression: | Expression is primarily restricted to central and peripheral nervous system. Greatly increased expression in most cancerous tissues. |









[Precautions]

1. IF this antibody is used in immunohistochemistry (IHC), immunofluorescence (IF), Western Blot (WB) and other experiments, please take care to retrieve the used diluted antibody. The recovered antibody can usually be reused at least 5-10 times. The diluted antibodies, including those that have already been used, should be stored at 2°C ~8°C.
2. If the antibody is reused after recovery, use the same method as the freshly diluted antibody. If slight turbidity of the antibody is found during repeated use, the antibody can be centrifuged at 10,000g for 1-3 minutes, and the supernatant can be used for subsequent testing. If the recovered antibody shows obvious flocculence or growth of mold and bacteria, it can be considered to discard the antibody.
3. This product is limited to the scientific research use of professionals. It should not be used for clinical diagnosis or treatment, food or medicine, or stored in ordinary residences.
4. For your safety and health, please wear a lab coat and wear disposable gloves to operate.

[Products Image]



[Description Of Product Symbol]

| Product Symbol | Description | Product Symbol | Description |
|---|------------------------------|---|-------------------|
|  | Catalog Number |  | Batch Code |
|  | Date of Manufacture |  | Manufacturer |
|  | Keep away from light |  | Temperature limit |
|  | Consult instructions for use |  | Use-by date |

[Instruction Revision Date]

April 23, 2024

[Company Information]

Manufacturer and after-sales service unit Name: Shenzhen Dakewe Bio-engineering Co., Ltd.

Website: www.dakewe.com

Telephone: (86-755) 86235300

Email: RD@dakewe.com

Address: Room 702-703, Building No.1, Shenzhen Biomedicine Innovations Industrial Park,
No.14 Jinhui Road, Kengzi Street, Pingshan District, Shenzhen, China

After-sales service telephone: (86-755) 86235300

Zip Code: 518122