

## Histone H3 Mouse Monoclonal Antibody

Cat#: 8017131

### [Product Name]

Histone H3 Mouse Monoclonal Antibody

### [Model & Size]

Product Name	Cat No.	Size
Histone H3 Mouse Monoclonal Antibody	8017131	100 µg

### [Product Introduction]

Source	Applications	Reactivity	Observed Band
Mouse	WB; IF; IHC; IP	Human; Mouse; Rat; Yeast; Arabidopsis thaliana	15 kDa

### [Storage And Transportation]

Stored at -25°C to -15°C, valid for 12 months.

Transported on blue ice.

### [Antibody Details]

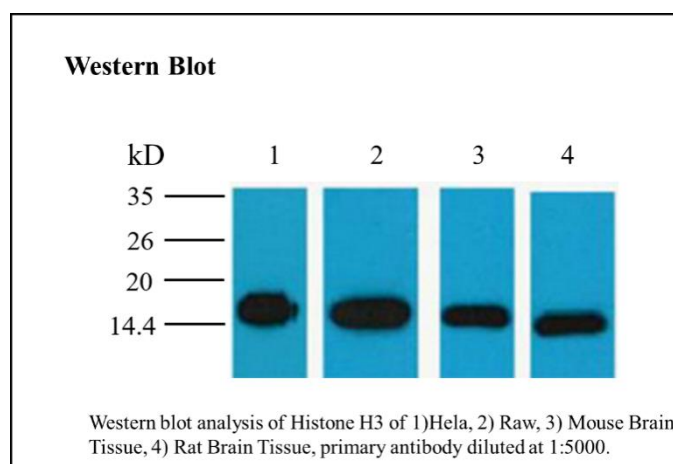
Gene Name:	HIST1H3A/HIST1H3B/HIST1H3C/HIST1H3D/HIST1H3E/HIST1H3F/HIST1H3G/HIST1H3H/HIST1H3I/HIST1H3J/HIST2H3A/HIST2H3C/HIST2H3D/H3F3A/H3F3B
Protein Name:	Histone H3.1/Histone H3.2/Histone H3.3
Human Gene Id:	8350/8351/8352/8353/8354/8355/8356/8357/8358/8968
Human Swiss Prot No.:	P68431/Q71DI3/P84243
Mouse Gene Id:	319152/15077/15078
Rat Gene Id:	291159/100361558
Rat Swiss Prot No.:	Q6LED0/P84245
Immunogen:	Recombinant Protein of Histone H3
Specificity:	The antibody detects endogenous Histone H3 protein.
Composition:	PBS, pH7.4, containing 0.5%BSA, 0.02% sodium azide as Preservative and 50% Glycerol.
Source:	Monoclonal, Mouse
Concentration:	1 mg/mL
Dilution:	WB 1:2000-5000; IF 1:100-500; IHC 1:50-300; IP 1:200
Purification:	The antibody was affinity-purified from mouse ascites by affinity-chromatography using specific immunogen.
Subcellular Location:	Nucleus, Chromosome.

Expression:	Blood, Epithelium, Kidney, Lung, Ovary, Spleen, Uterus
-------------	--









### [Precautions]

1. IF this antibody is used in immunohistochemistry (IHC), immunofluorescence (IF), Western Blot (WB) and other experiments, please take care to retrieve the used diluted antibody. The recovered antibody can usually be reused at least 5-10 times. The diluted antibodies, including those that have already been used, should be stored at 2°C ~8°C.
2. If the antibody is reused after recovery, use the same method as the freshly diluted antibody. If slight turbidity of the antibody is found during repeated use, the antibody can be centrifuged at 10,000g for 1-3 minutes, and the supernatant can be used for subsequent testing. If the recovered antibody shows obvious flocculence or growth of mold and bacteria, it can be considered to discard the antibody.
3. This product is limited to the scientific research use of professionals. It should not be used for clinical diagnosis or treatment, food or medicine, or stored in ordinary residences.
4. For your safety and health, please wear a lab coat and wear disposable gloves to operate.

### [Products Image]



### [Description Of Product Symbol]

Product Symbol	Description	Product Symbol	Description
	Catalog Number		Batch Code
	Date of Manufacture		Manufacturer
	Keep away from light		Temperature limit
	Consult instructions for use		Use-by date

### [Instruction Revision Date]

April 23, 2024

### [Company Information]

**Manufacturer and after-sales service unit Name:** Shenzhen Dakewe Bio-engineering Co., Ltd.

**Website:** www.dakewe.com

**Telephone:** (86-755) 86235300

**Email:** RD@dakewe.com

**Address:** Room 702-703, Building No.1, Shenzhen Biomedicine Innovations Industrial Park, No.14 Jinhui Road, Kengzi Street, Pingshan District, Shenzhen, China

**After-sales service telephone:** (86-755) 86235300  
**Zip Code:** 518122