

PCNA Mouse Monoclonal Antibody

Cat#: 8017141

[Product Name]

PCNA Mouse Monoclonal Antibody

[Model & Size]

Product Name	Cat No.	Size
PCNA Mouse Monoclonal Antibody	8017141	100 µg

[Product Introduction]

Source	Applications	Reactivity	Observed Band
Mouse	WB; IF; IHC	Human; Rat; Mouse	30-33 kDa

[Storage And Transportation]

Stored at -25°C to -15°C, valid for 12 months.

Transported on blue ice.

[Antibody Details]

Gene Name:	PCNA
Protein Name:	Proliferating cell nuclear antigen
Human Gene Id:	5111
Human Swiss Prot No.:	P12004
Mouse Gene Id:	18538
Mouse Swiss Prot No.:	P17918
Rat Gene Id:	25737
Rat Swiss Prot No.:	P04961
Immunogen:	Synthetic Peptide of PCNA
Specificity:	The antibody detects endogenous PCNA protein.
Composition:	PBS, pH7.4, containing 0.5%BSA, 0.02% sodium azide as Preservative and 50% Glycerol.
Source:	Monoclonal, Mouse
Concentration:	1 mg/mL
Dilution:	WB 1:5000; IF 1:200; IHC 1:200
Purification:	The antibody was affinity-purified from mouse ascites by affinity-chromatography using specific immunogen.
Subcellular Location:	PCNA exists in normal proliferating cells and tumor cells, and locates in the nucleus. Some studies have found that PCNA is closely related to cellular DNA synthesis and plays an important role in the initiation of cell proliferation, which is a good indicator of cell proliferation.
Expression:	Bone marrow, Fetal brain cortex, Lung, Placenta

[Precautions]

- IF this antibody is used in immunohistochemistry (IHC), immunofluorescence (IF), Western Blot

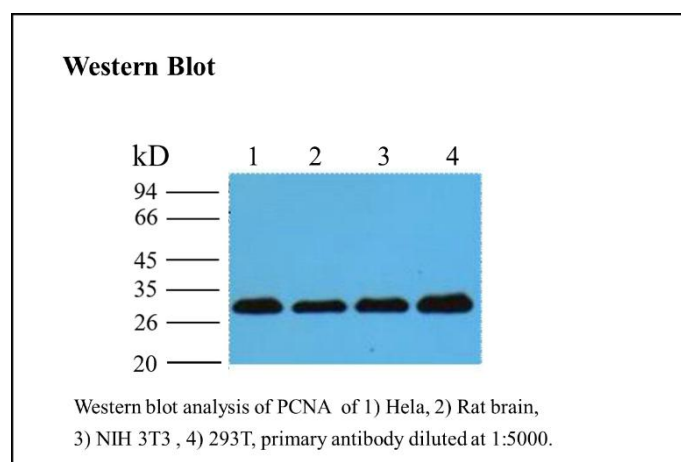
(WB) and other experiments, please take care to retrieve the used diluted antibody. The recovered antibody can usually be reused at least 5-10 times. The diluted antibodies, including those that have already been used, should be stored at 2°C~8°C.

2. If the antibody is reused after recovery, use the same method as the freshly diluted antibody. If slight turbidity of the antibody is found during repeated use, the antibody can be centrifuged at 10,000g for 1-3 minutes, and the supernatant can be used for subsequent testing. If the recovered antibody shows obvious flocculence or growth of mold and bacteria, it can be considered to discard the antibody.









3. This product is limited to the scientific research use of professionals. It should not be used for clinical diagnosis or treatment, food or medicine, or stored in ordinary residences.

4. For your safety and health, please wear a lab coat and wear disposable gloves to operate.

[Products Image]



[Description Of Product Symbol]

Product Symbol	Description	Product Symbol	Description
	Catalog Number		Batch Code
	Date of Manufacture		Manufacturer
	Keep away from light		Temperature limit
	Consult instructions for use		Use-by date

[Instruction Revision Date]

April 23, 2024

[Company Information]

Manufacturer and after-sales service unit Name: Shenzhen Dakewe Bio-engineering Co., Ltd.

Website: www.dakewe.com

Telephone: (86-755) 86235300

Email: RD@dakewe.com

Address: Room 702-703, Building No.1, Shenzhen Biomedicine Innovations Industrial Park, No.14 Jinhui Road, Kengzi Street, Pingshan District, Shenzhen, China

After-sales service telephone: (86-755) 86235300

Zip Code: 518122