

β-actin Rabbit Polyclonal Antibody

Cat#: 8017161

[Product Name]

β-actin Rabbit Polyclonal Antibody

[Model & Size]

Product Name	Cat No.	Size
β-actin Rabbit Polyclonal Antibody	8017161	100 µg

[Product Introduction]

Source	Applications	Reactivity	Observed Band
Polyclonal, Rabbit, IgG	WB; IF; IHC; ELISA	Human; Mouse; Rat; Chicken; Globefish; Bovine; Hamster; Pig; Ovine; Cat; Pig; Dog; Sheep	42 kDa

[Storage And Transportation]

Stored at -25°C to -15°C, valid for 12 months.

Transported on blue ice.

[Antibody Details]

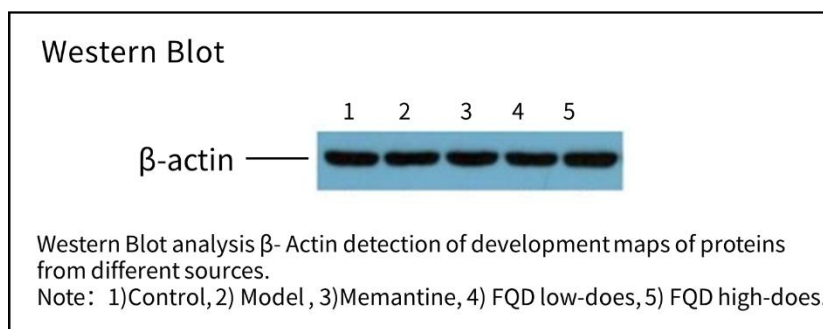
Gene Name:	ACTB
Protein Name:	Actin cytoplasmic 1
Human Gene Id:	60
Human Swiss Prot No.:	P60709
Mouse Gene Id:	11461
Mouse Swiss Prot No.:	P60710
Rat Gene Id:	81822
Rat Swiss Prot No.:	P60711
Immunogen:	Synthesized peptide derived from the N-terminal region of human Actin β. AA range: 1-80
Specificity:	Actin β Polyclonal Antibody detects endogenous levels of Actin β protein.
Composition:	PBS, pH7.4, containing 0.5%BSA, 0.02% sodium azide as Preservative and 50% Glycerol.
Source:	Polyclonal, Rabbit, IgG
Concentration:	1 mg/mL
Dilution:	WB 1:2000-10000; IF 1:50-200; IHC 1:100-300; ELISA 1:20000
Purification:	The antibody was affinity-purified from rabbit antiserum by affinity chromatography using epitope-specific immunogen.
Subcellular Location:	Cytoplasm, cytoskeleton, Nucleus. Localized in cytoplasmic mRNP granules containing untranslated mRNAs.

Expression:	B-cell lymphoma, Brain, Cajal-Retzius cell, Eye, Fetal brain cortex, Foreskin, Hepatocellular car
-------------	---









[Precautions]

1. IF this antibody is used in immunohistochemistry (IHC), immunofluorescence (IF), Western Blot (WB) and other experiments, please take care to retrieve the used diluted antibody. The recovered antibody can usually be reused at least 5-10 times. The diluted antibodies, including those that have already been used, should be stored at 2°C~8°C.
2. If the antibody is reused after recovery, use the same method as the freshly diluted antibody. If slight turbidity of the antibody is found during repeated use, the antibody can be centrifuged at 10,000g for 1-3 minutes, and the supernatant can be used for subsequent testing. If the recovered antibody shows obvious flocculence or growth of mold and bacteria, it can be considered to discard the antibody.
3. This product is limited to the scientific research use of professionals. It should not be used for clinical diagnosis or treatment, food or medicine, or stored in ordinary residences.
4. For your safety and health, please wear a lab coat and wear disposable gloves to operate.

[Products Image]



[Description Of Product Symbol]

Product Symbol	Description	Product Symbol	Description
	Catalog Number		Batch Code
	Date of Manufacture		Manufacturer
	Keep away from light		Temperature limit
	Consult instructions for use		Use-by date

[Instruction Revision Date]

April 23, 2024

[Company Information]

Manufacturer and after-sales service unit Name: Shenzhen Dakewe Bio-engineering Co., Ltd.

Website: www.dakewe.com

Telephone: (86-755) 86235300

Email: RD@dakewe.com

Address: Room 702-703, Building No.1, Shenzhen Biomedicine Innovations Industrial Park, No.14 Jinhui Road, Kengzi Street, Pingshan District, Shenzhen, China

After-sales service telephone: (86-755) 86235300

Zip Code: 518122